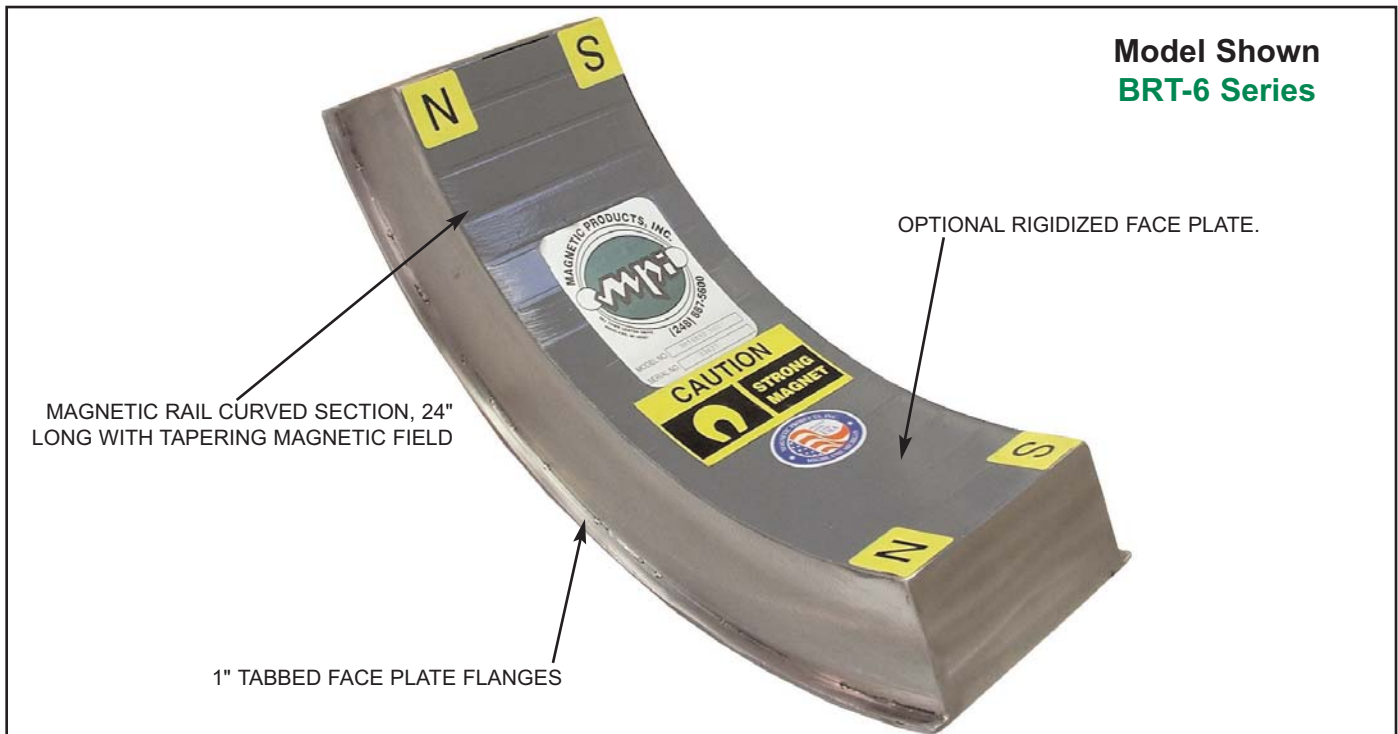




Magnetic Conveying "T"-Type Box Rails

Series: *BRT*

Model Shown
BRT-6 Series



Application: MPI's MAGNETIC "T" TYPE BOX RAILS (BRT Series) are designed for easy installation into new or existing material handling equipment. Magnetic Box Rails are used to hold, position and control ferrous or partly ferrous parts. They are ideal for use in "can handling" conveyor systems. The rails strong magnetic field is completely contained within the working surface and is extremely effective in applications which require a high "reachout" magnetic field. Magnetic Box Rails are used to:

- Save floor space by elevating parts up inclines.

- Change direction of moving parts.
- Control the speed of moving parts.
- Stabilize and hold parts in position.
- Magnetically separate ferrous parts from non-ferrous materials in conveying and processing lines.

Operation: Magnetic "T" type Box Rails are usually mounted in tandem with magnetic pulleys and other rails beneath a conveyor's belt. The mounting flange provides quick installation to a conveyor's framework or table and can be custom designed and manufactured to fit your specifications.

Got a question about Metal Control
or Material Handling Products...

Ask the
**Magnet
Man**



www.magnetmanusa.com

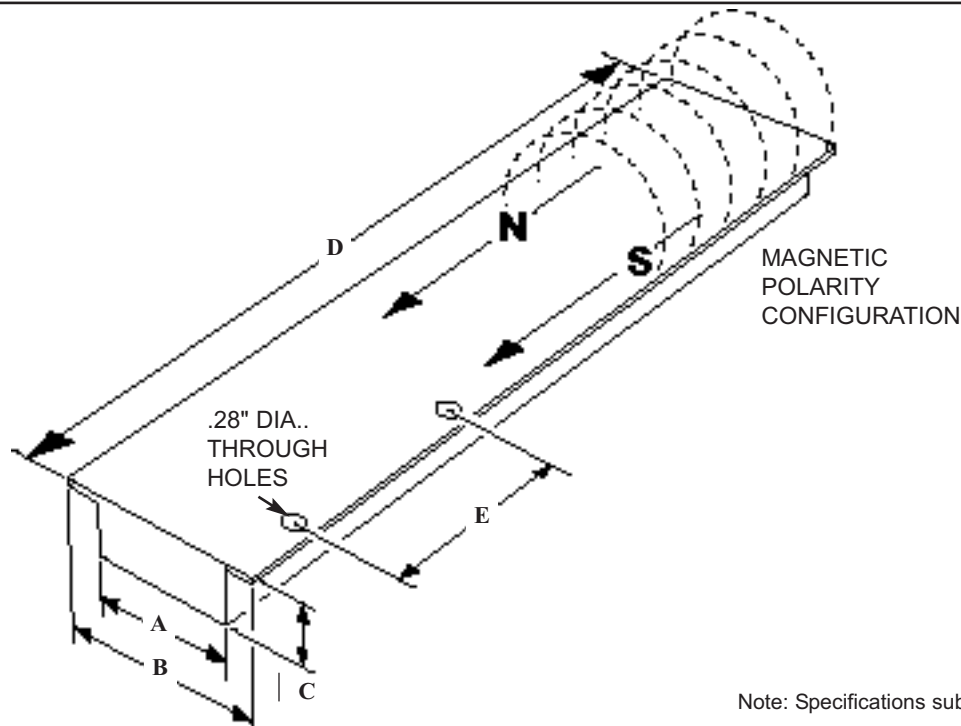
Magnetic Products, Inc.

Providing Magnetic Solutions for the
Material Handling Industry

800-544-5930



Providing Magnetic Solutions For the Material Handling Industry



BOX RAIL - SERIES BRT - SELECTION CHART

BRT MODEL NUMBER	WIDTH DIM. "A"		OVERALL WIDTH DIM. "B"		THICKNESS DIM. "C"		LENGTH DIM. "D"		TAP DISTANCE DIM. "E"	
	IN.	MM	IN.	MM	IN.	MM	IN.	MM	IN.	MM
BRT-2	2.625	67	BUILT TO CUSTOMER'S SPECIFICATIONS (1" FLANGE STANDARD)		.562	14	BUILT TO CUSTOMER'S SPECIFICATIONS (UP TO 8')		BUILT TO CUSTOMER'S SPECIFICATIONS (12" ON-CENTER IN BACKPLATE STANDARD)	
BRT-4	4.187	106			.812	21				
BRT-6	4.187	106			1.060	27				
BRT-8	4.187	106			1.312	33				
BRT-12	4.187	106			1.937	49				
BRT-16	5.187	132			2.560	65				
BRT-24	8.187	208			4.062	103				

Standard Features:

- 100% Stainless Steel cover
- Powerful Ceramic magnet material
- Mild steel backing plate

Optional Features:

- Rigidized face plate
- Angled infeed and discharge ends, to match pulley

- Tapering magnetic fields
- Curved rails for 30°, 45°, 60°, or 90° turns and inside or outside radii from 4" to 72"
- Custom face plate flanges
- Custom mounting holes
- Non-standard magnetic polarities
- Multiple lane magnetic fields

Magnetic Products Inc.

P.O. Box 529 • 683 Town Center Dr. • Highland, MI • 48357

TOLL FREE: 800-544-5930 • 248-887-5600

FAX: 248-887-6100

EMAIL: info@mpimagnet.com

www.mpimagnet.com

PRODUCT BULLETIN GROUP: 101
SERIES: BRT, REV. 07/05
© COPYRIGHT 1995 MPI

DISTRIBUTED BY:

