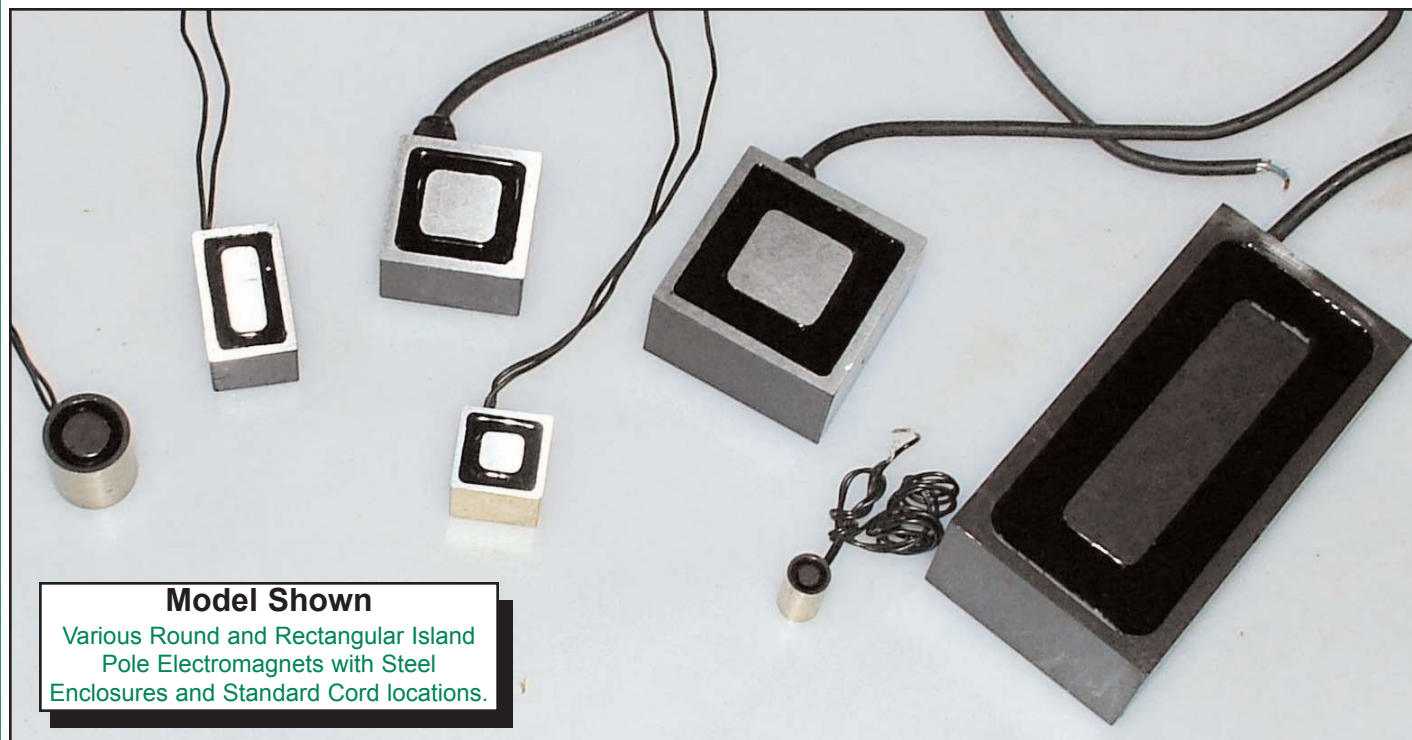




## Round and Rectangular Island Pole Electromagnets

Series: RE & SE 24 Volts



### Model Shown

Various Round and Rectangular Island Pole Electromagnets with Steel Enclosures and Standard Cord Locations.

#### APPLICATION:

MPI's ROUND AND RECTANGULAR ISLAND POLE ELECTROMAGNETS (RE & SE Series) offer an effective alternative to mechanical holding devices, hooks, or chains. Electromagnets have no moving parts, valves or springs to wear out. MPI Electromagnets offer increased productivity, while decreasing maintenance in automated parts handling, plate, sheet or bar steel handling, and machine shop operations.

#### OPERATION:

MPI's RE & SE Series Electromagnets are "Island Pole Designated". When energized, the magnet's outer edge will produce either a North or South magnetic field to surround the center pole. This type of magnetic circuit produces a direct, concentrated magnetic field—ideal for part hold down and quick, sure positioning.

#### STANDARD FEATURES:

- 24" Standard cord length
- Automatic or Manual operated.
- Durable steel construction.
- Copper Wound Coils.
- Normal operating temperature 175°F / 80°C
- Temperature range up to 265°F / 130°C

#### OPTIONAL FEATURES:

- Mounting locations.
- 12 VDC configurations
- Selective cord location and length
- Custom designs

#### POWER SUPPLIES:

MPI offers a complete line of Power Supplies to meet your requirements. MPI Power Supplies can accept 150 VAC or 230 VAC input and can be ordered with an optional variable voltage control and/or a timed reverse circuit for quick part release.

Got a question about Metal Control or Material Handling Products...

Ask the  
**Magnet Man**



[www.magnetmanusa.com](http://www.magnetmanusa.com)

# Magnetic Products, Inc.

Providing Magnetic Solutions for the  
Material Handling Industry

800-544-5930



# Providing Magnetic Solutions For the Material Handling Industry

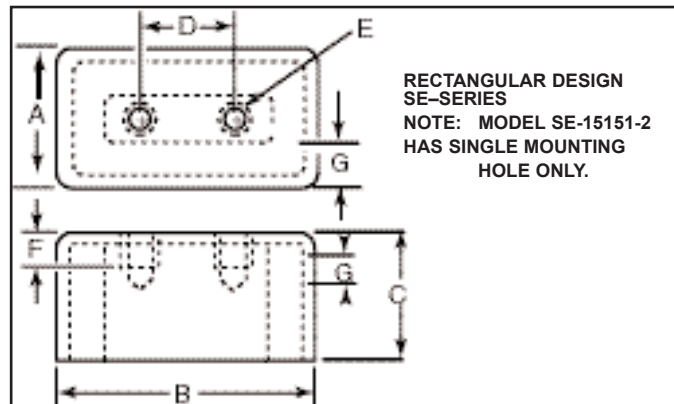
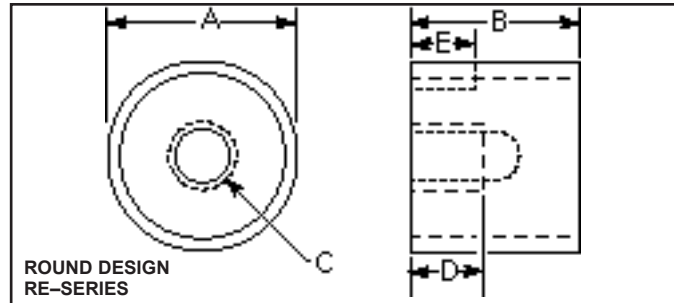
## SELECTION:

The effectiveness of electromagnetic lifting is governed by several major factors, including:

- Surface condition of the material and magnet.
- Type of ferrous material to be lifted.
- Material thickness.
- Contact area of magnet.
- Surface dimensions of the workload

All MPI Electromagnets have been Pull Tested using 2" thick flat, clean mild steel. Holding values decrease rapidly when used with rough, dirty, painted or thin surfaces which cause air gaps. The holding values (shown below as lbs. of pull) are maximum and a safety factor of at least two should be used. For a safe application of a electromagnet application, derate the listed pull values by 50%.

With over 100 years of collective experience in the industry, MPI can provide you with the engineering assistance and recommendations to fit your application. For more information please contact your local sales representative or contact our factory.



## RE-2 SERIES • ROUND DESIGN • SELECTION CHART

| MODEL NUMBER | DIA. "A" | HEIGHT "B" | THREAD "C" | DEPTH "D" | LEAD "E" | AMPS | WATTS | VOLTS DC | OHMS | MAX. PULL LBS.* | UNIT WT.  |
|--------------|----------|------------|------------|-----------|----------|------|-------|----------|------|-----------------|-----------|
| RE-071212    | .75      | 1.250      | 10-32      | .375      | .1875    | .058 | 1.4   | 24       | 413  | 9               | 2.1 oz.   |
| RE-100712    | 1.00     | .750       | 10-32      | .375      | .1875    | .058 | 1.4   | 24       | 413  | 26              | 2.3 oz.   |
| RE-101212    | 1.00     | 1.250      | 10-32      | .500      | .1875    | .15  | 3.6   | 24       | 160  | 32              | 3.3 oz.   |
| RE-121212    | 1.25     | 1.250      | .250-20    | .500      | .1875    | .183 | 4.4   | 24       | 131  | 50              | 5.7 oz.   |
| RE-151512    | 1.50     | 1.500      | .250-20    | .500      | .250     | .191 | 4.6   | 24       | 125  | 80              | 9.90 oz.  |
| RE-201612    | 2.00     | 1.625      | .250-20    | .500      | .250     | .233 | 5.6   | 24       | 102  | 180             | 1.1 lbs.  |
| RE-303012    | 3.00     | 3.000      | .3125-18   | 1.00      | .6250    | 1.04 | 25.0  | 24       | 23   | 400             | 5.0 lbs.  |
| RE-403012    | 4.00     | 3.000      | .375-16    | 1.00      | .6250    | 1.5  | 36.0  | 24       | 16   | 700             | 9.0 lbs.  |
| RE-503012    | 5.00     | 3.000      | .500-13    | 1.00      | .750     | 1.79 | 43.0  | 24       | 13.4 | 1200            | 13.0 lbs. |
| RE-603012    | 6.00     | 3.000      | .625-11    | 1.00      | .8750    | 1.92 | 46.0  | 24       | 12.5 | 1700            | 20.0 lbs. |

NOTE: SPECIFICATIONS SUBJECT TO CHANGE. CUSTOM SIZES AVAILABLE UPON REQUEST.

\* PULL TEST IS BASED ON 2" THICK FLAT MILD STEEL. FOR SAFE RE & SE APPLICATION USE, PULL VALUES SHOULD BE DERATED BY 50%.

## SE-2 SERIES • RECTANGULAR DESIGN • SELECTION CHART

| MODEL    | WIDTH "A" | LENGTH "B" | HEIGHT "C" | HOLE SPACING "D" | THREAD "E" | DEPTH "F" | LEAD "G" | AMPS  | WATTS | VOLTS DC | OHMS | MAX. PULL LBS.* | UNIT WT.  |
|----------|-----------|------------|------------|------------------|------------|-----------|----------|-------|-------|----------|------|-----------------|-----------|
| SE-15152 | 1.5       | 1.5        | 1.250      | N/A              | 10-32      | .375      | .375     | .333  | 8     | 24       | 72   | 100             | 10 oz.    |
| SE-15252 | 1.5       | 2.5        | 1.250      | 1.00             | 10-32      | .375      | .375     | .416  | 10    | 24       | 57.6 | 160             | 1.0 lbs.  |
| SE-25252 | 2.5       | 2.5        | 1.500      | N/A              | .250-20    | .500      | .500     | .583  | 14    | 24       | 41.1 | 300             | 2.0 lbs.  |
| SE-25452 | 2.5       | 4.5        | 1.875      | 2.00             | .250-20    | .750      | .625     | 1.208 | 29    | 24       | 19.8 | 600             | 5.0 lbs.  |
| SE-35352 | 3.5       | 3.5        | 2.000      | N/A              | .375-16    | .750      | .625     | 1.166 | 28    | 24       | 20.5 | 700             | 5.0 lbs.  |
| SE-04082 | 4.0       | 8.0        | 2.500      | 4.00             | .375-16    | 1.00      | .875     | 2.416 | 58    | 110      | 9.9  | 1700            | 18.0 lbs. |

NOTE: SPECIFICATIONS SUBJECT TO CHANGE. CUSTOM SIZES AVAILABLE UPON REQUEST.

\* PULL TEST IS BASED ON 2" THICK, FLAT MILD STEEL. FOR SAFE APPLICATION USE, PULL VALUES SHOULD BE DERATED BY 50%.

## Magnetic Products Inc.

P.O. Box 529 • 683 Town Center Dr. • Highland, MI • 48357

TOLL FREE: 800-544-5930 • 248-887-5600

FAX: 248-887-6100

EMAIL: [info@mpimagnet.com](mailto:info@mpimagnet.com)

[www.mpimagnet.com](http://www.mpimagnet.com)

DISTRIBUTED BY: