



Suspended Electromagnetic Separator

Series: ECBS

1" THICK
LIFTING LUGS

Model Shown
ECBS-48

HEAVY-DUTY
RUBBER BELT

HEAVY-DUTY
STEEL PLATE
FRAME

2 HP to 5 HP MOTORS AVAILABLE WITH
SHAFT MOUNTED SPEED REDUCERS

General Description:

MPI's SUSPENDED ELECTROMAGNETIC SEPARATORS are specifically designed to produce the most effective magnetic force available. The cooling system is engineered to allow the coil to operate at extremely high intensity while remaining relatively cool in its frame. Transformer oil in and around the parts of the coil windings keeps all components at the same temperature.

Standard Features:

- 5 HP motors (models ECBS-48 & above)
- 3 HP motors (models ECBS-42 & below)
- Shaft mounted speed reducers
- Self-aligning re-greasable pillow block bearings
- Non-magnetic belt fasteners
- 3-ply non-endless rubber belts with vulcanized rubber cleats
- Texaco (ASTM D3487) transformer cooling oil. (spec.

sheet available upon request)

- Chain drive

Optional Features:

A broad selection of options are available to provide peak production in uncommon or involved applications.

Some of these are:

- Steel dust enclosures for magnet installations in dusty locations
- Zero-speed switches
- Special belts for abrasive, hot or special applications
- Non-flammable coolant
- Static-conducting belts
- Belt sheave drive
- NEMA 4 enclosure
- NEMA 12 enclosure
- Non-standard motor voltage
- Manual motor starter

Got a question about Metal Control
or Material Handling Products...

Ask the
**Magnet
Man**



www.magnetmanusa.com

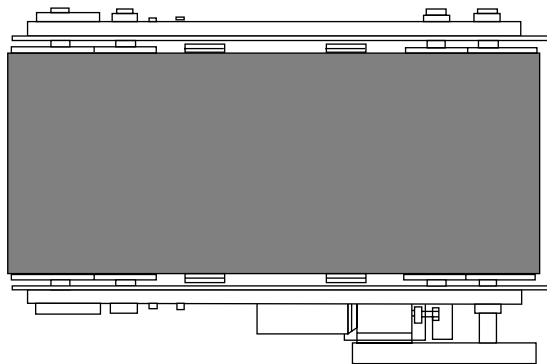
Magnetic Products, Inc.

Providing Magnetic Solutions for the
Material Handling Industry

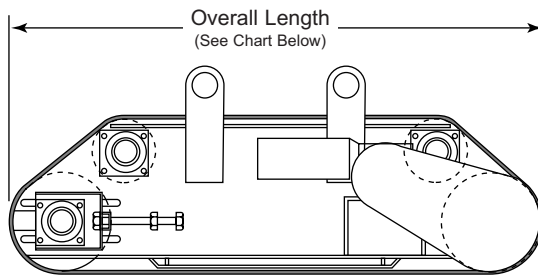
800-544-5930



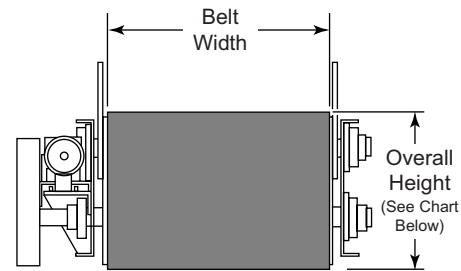
Providing Magnetic Solutions For the Material Handling Industry



Overall Width
(See Chart Below)



Overall Length
(See Chart Below)



Belt Width

Overall Height
(See Chart Below)

ECBS SELECTION GUIDE

MODEL NUMBER	SIZE L x W x H	BELT WIDTH	EST. UNIT'S WT. (LBS.)	VOLTAGE	WATTAGE	MOTOR HP
ECBS-24	75" x 45" x 20"	24"	1600	115 VDC	1600	2
ECBS-30	81" x 51" x 20"	30"	2500	115 VDC	2500	3
ECBS-36	87" x 57" x 26"	36"	3300	115 VDC	3600	3
ECBS-42	93" x 63" x 29"	42"	4700	230 VDC	4900	3
ECBS-48	99" x 69" x 32"	48"	6300	230 VDC	6400	5
ECBS-54	105" x 75" x 35"	54"	8200	230 VDC	8100	5
ECBS-60	113" x 84" x 38"	60"	10,400	230 VDC	10,000	5

Specifications subject to change. Optional sizes available upon request.

Standard Features:

- 5 HP motors (models ECBS-48 & above)
- 3 HP motors (models ECBS-42 & below)
- Shaft mounted speed reducers
- Self-aligning re-greasable pillow block bearings
- Non-magnetic belt fasteners
- 3-ply non-endless rubber belts with vulcanized rubber cleats
- Texaco (ASTM D3487) transformer cooling oil. (spec. sheet available upon request)
- Chain drive

Optional Features:

- Steel dust enclosures for magnet installations in dusty locations
- Zero-speed switches
- Special belts for abrasive, hot or special applications
- Non-flammable coolant
- Static-conducting belts
- Belt sheave drive
- NEMA 4 enclosure
- NEMA 12 enclosure
- Non-standard motor voltage

Magnetic Products Inc.

P.O. Box 529 • 683 Town Center Dr. • Highland, MI • 48357

TOLL FREE: 800-544-5930 • 248-887-5600

FAX: 248-887-6100

EMAIL: info@mpimagnet.com

www.mpimagnet.com

DISTRIBUTED BY: