



Magnetic Chute, Self-Cleaning *Series: MC-SC*

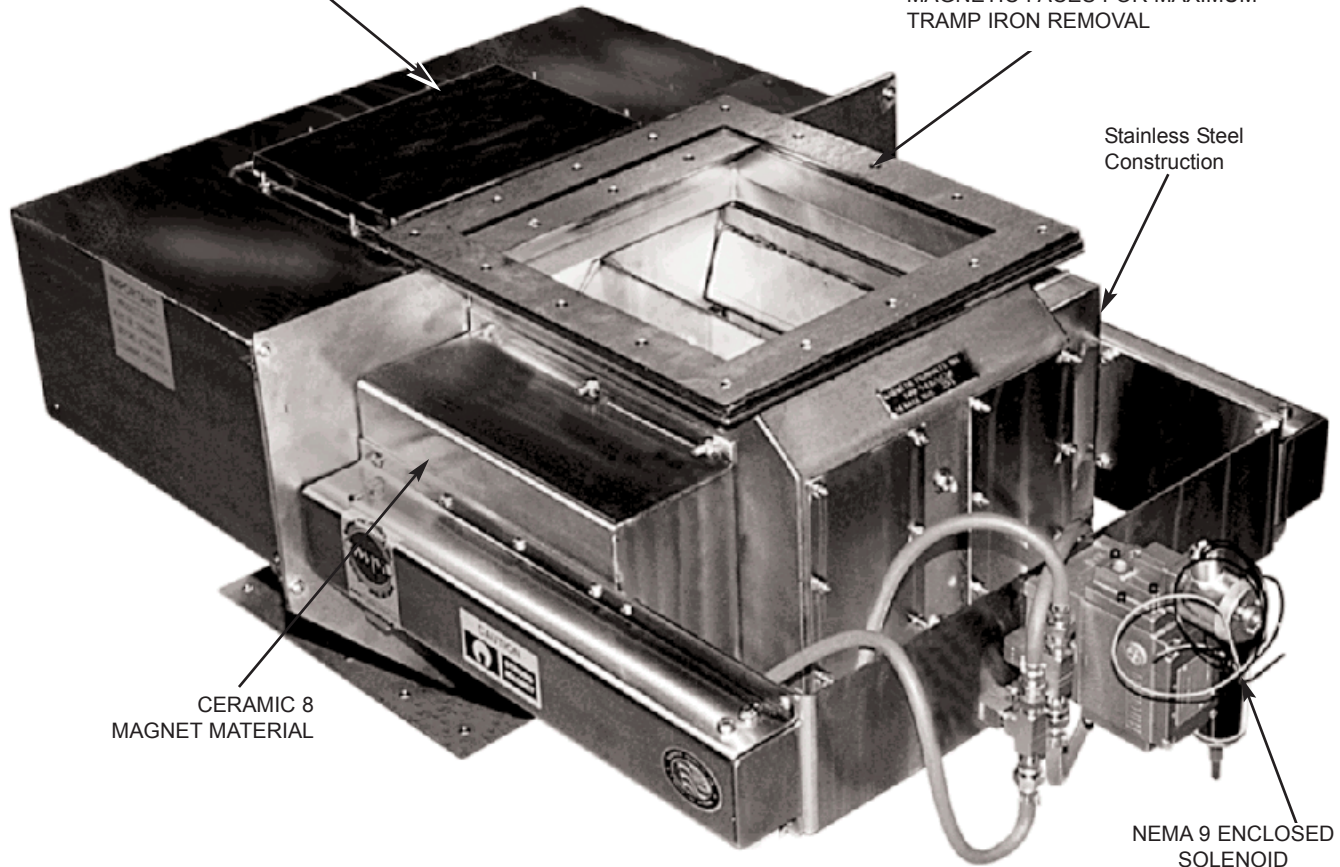
REMOVABLE INSPECTION DOOR

CENTER DIVERTER AND STEPPED
MAGNETIC FACES FOR MAXIMUM
TRAMP IRON REMOVAL

Stainless Steel
Construction

CERAMIC 8
MAGNET MATERIAL

NEMA 9 ENCLOSED
SOLENOID
(80psi req'd.)



Model Shown
MC-1014-SC

Application: MPI's SELF-CLEANING MAGNETIC CHUTES (MC-SC Series) are designed to remove medium to large size ferrous tramp iron contaminant from high-volume product streams in gravity-fed vertical chutes, such as grain, chemicals, foods and powders. MC-SC Series magnets are ideal for use with heavy product flows that would either bridge or choke if filtered through magnetic grates. Magnetic Chutes help protect equipment such as milling, processing and packaging machinery as well as improve product quality.

Operation: The product stream flows between two large, powerful permanent magnets located on either side of the chute. A center diverter directs the product flow towards the two magnetic faces, which are stepped to minimize tramp metal "wash-off". Tramp metal contaminant are pulled from the product stream and attach themselves to either magnetic face. The pneumatically operated cleaning shell safely removes the tramp metal from the product stream to a disposal area outside the chute.

Got a question about Metal Control
or Material Handling Products...

Ask the
**Magnet
Man**



www.magnetmanusa.com

Magnetic Products, Inc.

Providing Magnetic Solutions for the
Material Handling Industry

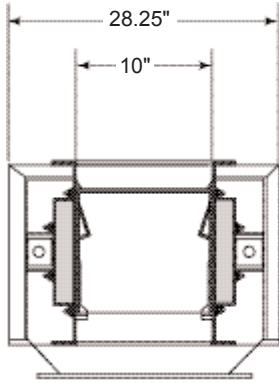
800-544-5930



Providing Magnetic Solutions For the Material Handling Industry

MC-SC PART NUMBERING CODE:

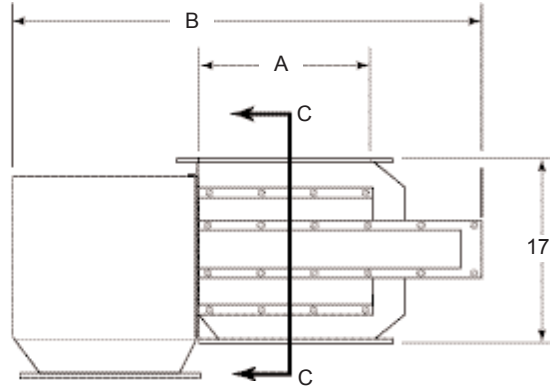
For a Magnetic Chute with a 10" x 24" inlet opening, with self-cleaning model would be MC-1024-SC.



SECTION C-C

INLET OPENING AREA CALCULATIONS:

FOR ROUND SPOUT: AREA = $3.14 \times R^2$
FOR RECTANGULAR CHUTE: AREA = L x W



MC-SC SERIES SELECTION CHART

MC-SC MODEL NUMBERS	PRODUCT'S FLOW MAX. INLET OPENING AREA		PRODUCT'S INLET FLOW OPENING LENGTH "A"		UNIT'S OVERALL LENGTH "B"		APPROX. UNIT'S WEIGHT	
	SQ. IN.	SQ. CM	IN.	CM	IN.	CM	LBS.	KG
MC-1010-SC	80	516	10	25.4	40	101.6	215	97
MC-1012-SC	96	619	12	30.5	44	111.7	258	117
MC-1014-SC	112	723	14	35.6	48	121.9	301	136
MC-1016-SC	128	826	16	40.6	52	132.0	344	156
MC-1018-SC	144	929	18	45.7	56	142.2	387	175
MC-1020-SC	160	1032	20	50.8	60	152.4	430	195
MC-1022-SC	176	1135	22	55.9	64	162.5	473	214
MC-1024-SC	192	1239	24	61.0	68	172.7	516	233
MC-1026-SC	208	1342	26	66.0	72	182.8	559	253
MC-1028-SC	224	1445	28	71.1	76	193.0	602	272
MC-1030-SC	240	1548	30	76.2	80	203.2	645	292
MC-1032-SC	256	1652	32	81.3	84	213.3	688	311
MC-1034-SC	272	1755	34	86.4	88	223.5	731	331
MC-1036-SC	288	1858	36	91.4	92	233.6	774	350

Note: Specifications subject to change. Special sizes available upon request.

Standard Features:

- Powerful Ceramic 8 permanent magnet material
- Safety guards, air filters and NEMA 9 enclosed solenoids as standard equipment
- Closed cell gasket for positive sealing
- Center diverter and stepped magnetic faces to maximize tramp iron removal

Optional Features:

- High energy Rare Earth magnet material
- 316L Stainless Steel construction
- Tramp metal collection trays
- NEMA 2 through 13 electrical enclosures
- Non-standard electrical components
- Chute transition adapters

Magnetic Products Inc.

P.O. Box 529 • 683 Town Center Dr. • Highland, MI • 48357

TOLL FREE: 800-544-5930 • 248-887-5600

FAX: 248-887-6100

EMAIL: info@mpimagnet.com

www.mpimagnet.com

DISTRIBUTED BY: