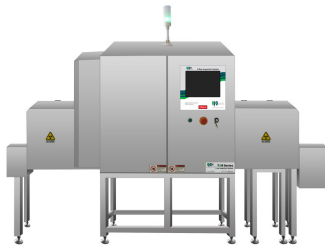




# DUAL BEAM - X-RAY



Hi-Q X-ray systems inspect for a full range of possible contaminants including metallic, and non-metallic (glass, ceramic, stone, bone, rubber, plastic etc.). Hi-Q X-ray can inspect metallic and non-metallic packaging and canned goods. Inspection is not effected by temperature, humidity, salt content or any other product effects.

[Complete Application Form for Quote](#)

## How It Works

X-ray inspection is sorting based on product density. An x-ray inspection machine takes an image that is pixel based. The machine compares pixel density to stored pictures of “good” product to detect defects and contaminants. If the density of a product falls outside of acceptable range the reject mechanism removes the contaminated product out of the product flow.

## Specifications

- For products in jars and cans.
- Applies dual image views to achieve optimal inspection and avoid missing blind areas.
- Intelligent zoning to ensure optimal sensitivity for different areas.
- Multi-function to achieve the synchronized inspection of foreign bodies, caps, fill level and packaging defects.

Model

Dual Beam X-Ray Inspection

<b>XR-HiQ-DB-210W-200-250</b>	
<b>X-Ray Tube</b>	Single tube max. 80Kv, 210W
<b>Max. Inspection Width</b>	200mm
<b>Max. Inspection Height</b>	250mm
<b>Detection Ability</b>	SUS Ball 0.4mm, SUS Wire 0.3*2mm
<b>Conveyor Speed</b>	10-70m/min
<b>Operating Environment</b>	Temp: -10 -40? C; Cooling Method: Industrial air conditioner Humidity: 30-90%, Non-condensing; Humidity control: dehumidifier
<b>X-Ray Emission</b>	< 1 microsievert per hour
<b>Rejecter</b>	Push type
<b>Pressure Requirements</b>	0.6-0.8Mpa
<b>Power Supply</b>	AC220V, 1.5Kva Max. 50/60Hz
<b>Levels of Protection</b>	IP66
<b>Main Material</b>	Stainless steel (SUS304)