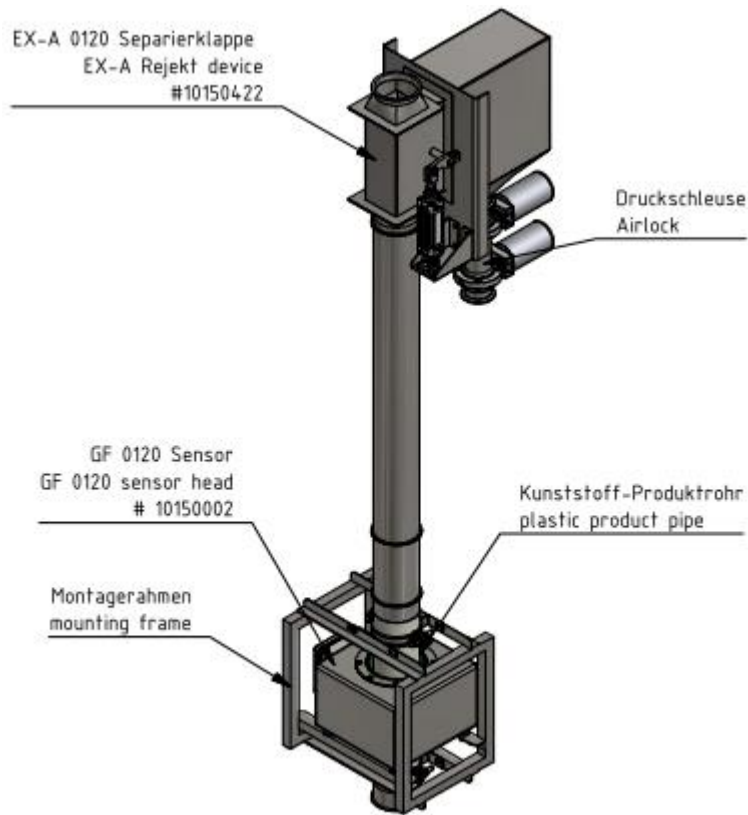
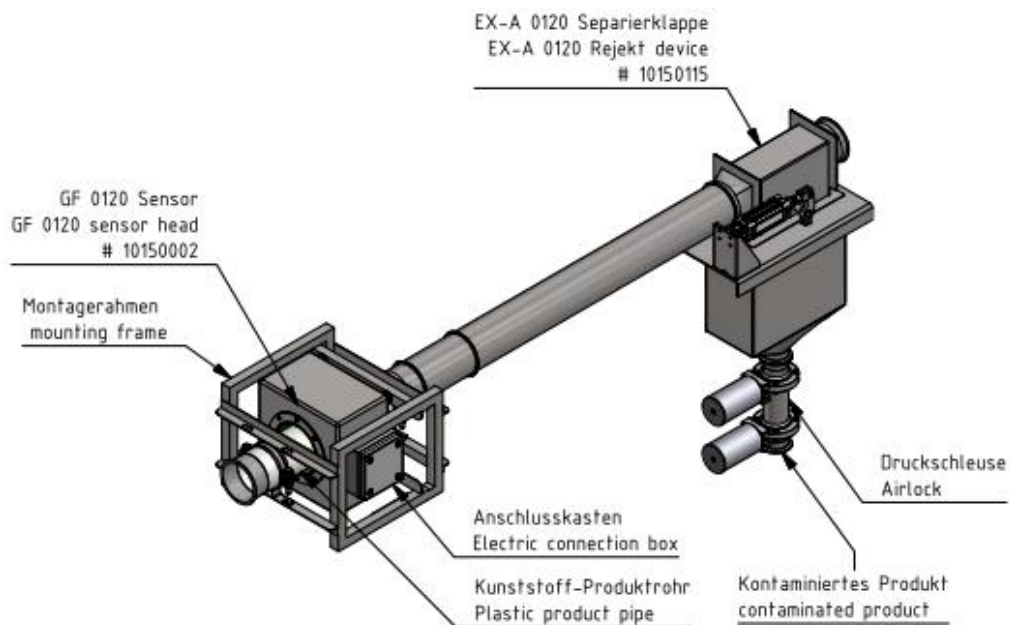


Reject EX-A for pressure or vacuum conveyor tubes

Vertical version:

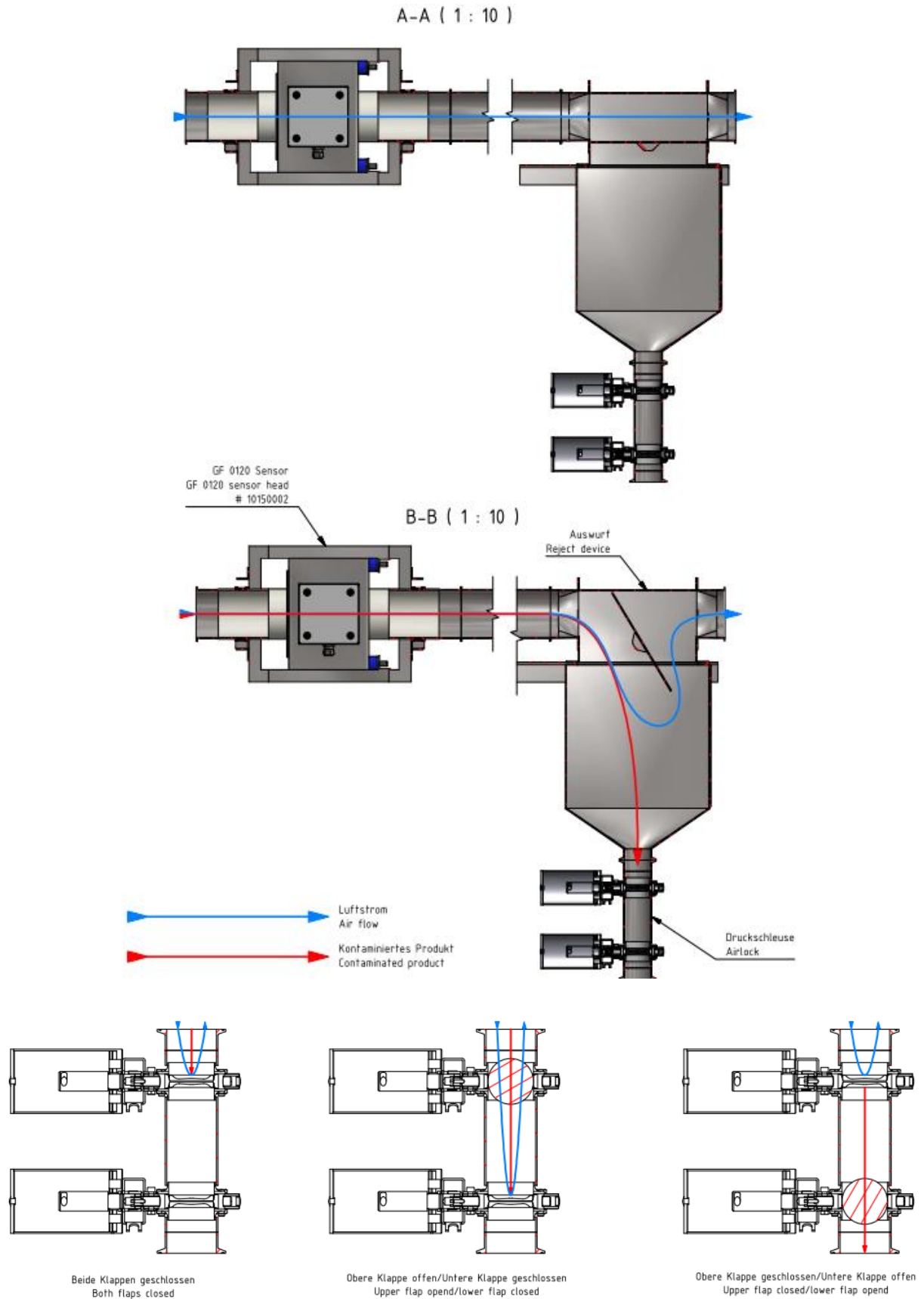


Horizontal version:



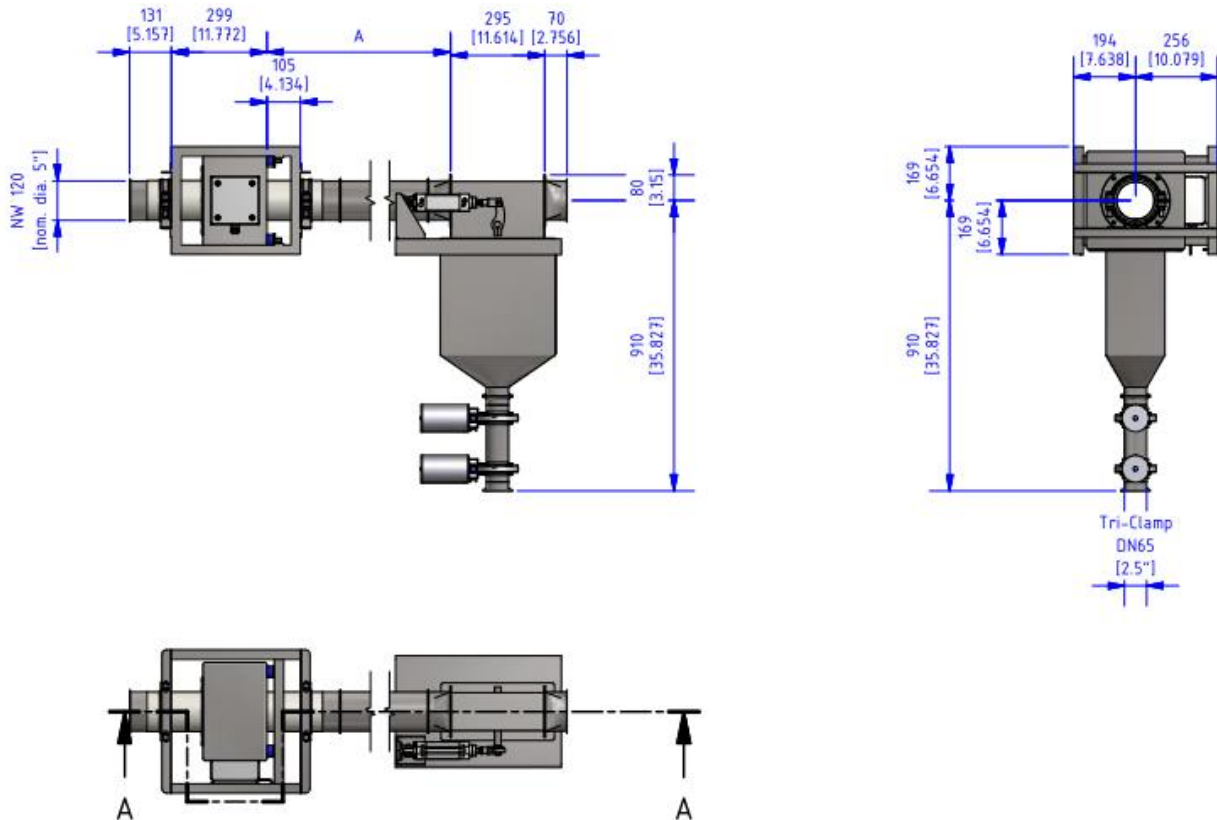
Reject EX-A for pressure or vacuum conveyor tubes

Function:



Reject EX-A for pressure or vacuum conveyor tubes

Abstand - Distance		
Geschwindigkeit/Speed [m/s]	A [mm]	A [in]
10	1000	39.370
15	1500	59.055
20	2000	78.740
25	2500	98.425



Reject EX-A for pressure or vacuum conveyor tubes

Abstand - Distance		
Geschwindigkeit/Speed [m/s]	A [mm]	A [in]
10	1000	39.370
15	1500	59.055
20	2000	78.740
25	2500	98.425

