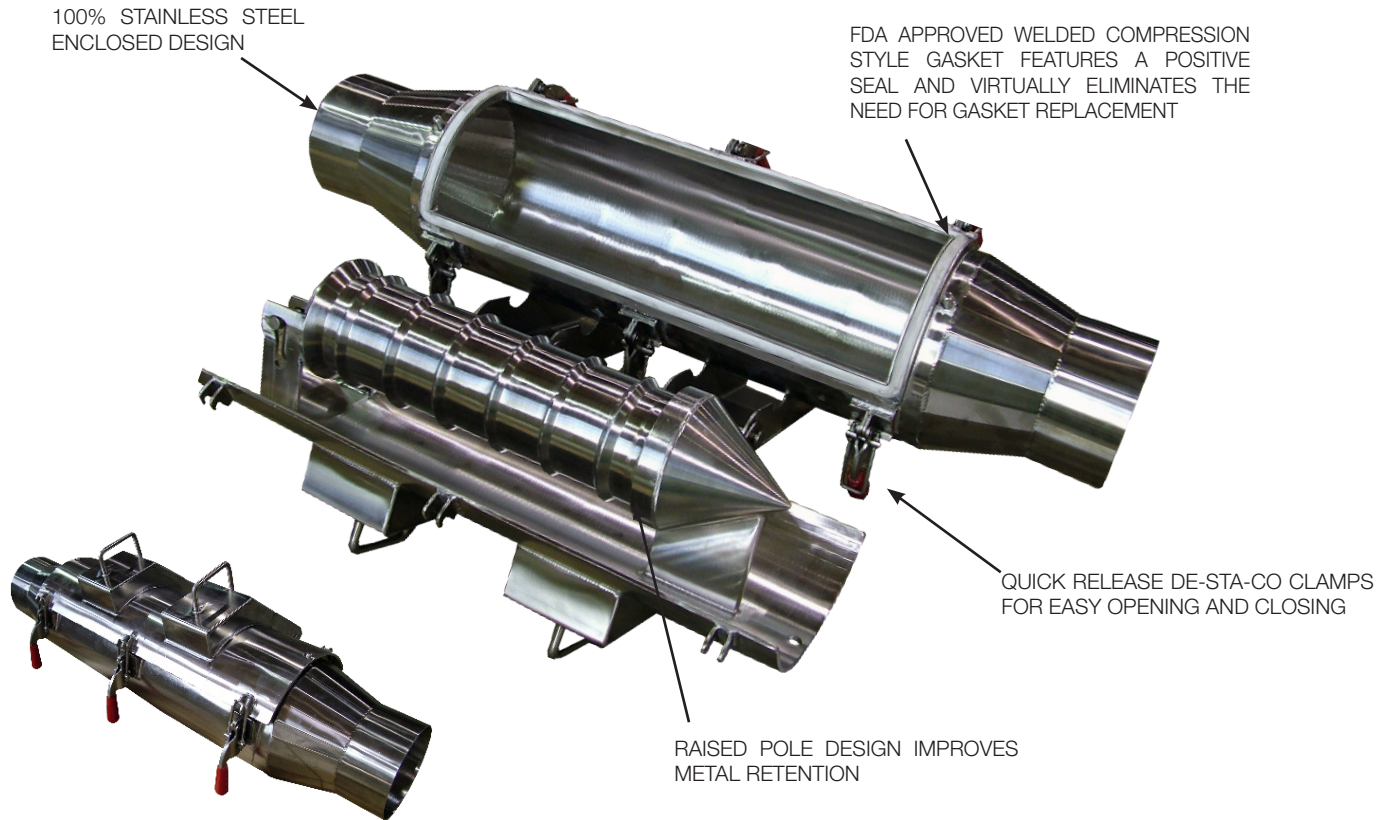




Pneumatic Line Magnet

Series: PLM-QC



Application

Used to remove fine metal contaminants in dilute-phase pneumatic conveying, MPI Pneumatic Line Magnets boast a sanitary design in all product contact areas, quick-release DE-STA-CO clamps for easy opening and closing, 100% stainless steel construction, and powerful Rare Earth magnet material. A new and improved food-grade silicone gasket offers a positive seal which virtually eliminates the need to replace gaskets. MPI provides a seam-welded magnetic stainless steel “raised” pole design that improves tramp metal retention between cleaning as compared to similar units.

Operation

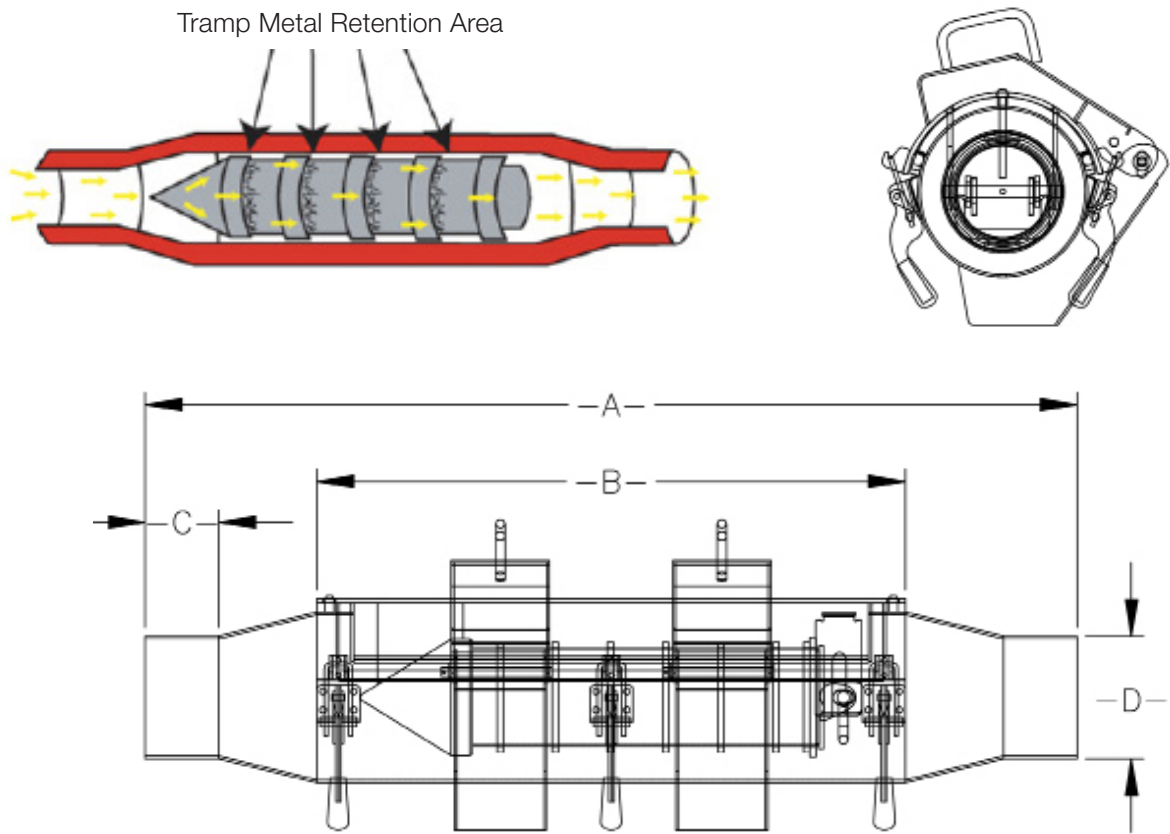
MPI Pneumatic Line Magnets are easy to install in vertical or horizontal piping. A quick-clean removable magnet element allows for rapid and easy removal of tramp metal. Raised pole design prevents “wash-off”, typical of smooth surface models. Most common applications include powder or granular food products, pharmaceuticals, plastics and chemicals conveyed at high speeds in low density, high-air systems.

**Specifications subject to change*

Series PLM-QC Version 2.0 © MPI

MPI

683 Town Center Drive, Highland, MI 48356 | p. 800.544.5930 | f. 248.887.6100
info@mpimagnet.com | www.mpimagnet.com



PLM-QC Selection Guide

MODEL NUMBER	OVERALL LENGTH A		DOOR LENGTH B		TUBE LENGTH C		TUBE DIAMETER D		UNIT WEIGHT	
	IN.	MM	IN.	MM	IN.	MM	IN.	MM	LBS.	KG
PLM-3-REN-QC	38	965	24	610	3	76	3	76	85	39
PLM-4-REN-QC	38	965	24	610	3	76	4	102	88	40
PLM-5-REN-QC	38	965	24	610	3	76	5	127	92	42
PLM-6-REN-QC	38	965	24	610	3	76	6	152	98	44
PLM-7-REN-QC	38	965	24	610	3	76	7	177	137	62
PLM-8-REN-QC	50	1270	36	914	4.5	114	8	203	170	77

Standard Features

- Powerful Rare magnet material
- 100% stainless steel enclosed design
- Quick-clean design features removable magnet element for fast and easy removal of tramp metal
- Quick-release DE-STA-CO clamps
- FDA approved compression style gasket features a positive seal and virtually eliminates the need for gasket replacement
- Raised magnetic poles designed to eliminate tramp metal "wash off" from product flow
- Rugged welded construction

Options

- Custom alloy stainless steel construction
- Mounting flanges and matching companion flanges
- Special pipe diameters and lengths
- Proximity switch to sense door position
- Buna gaskets
- High temperature magnet material

*Specifications subject to change

Series PLM-QC Version 2.0 © MPI

MPI

683 Town Center Drive, Highland, MI 48356 | p. 800.544.5930 | f. 248.887.6100
 info@mpimagnet.com | www.mpimagnet.com