

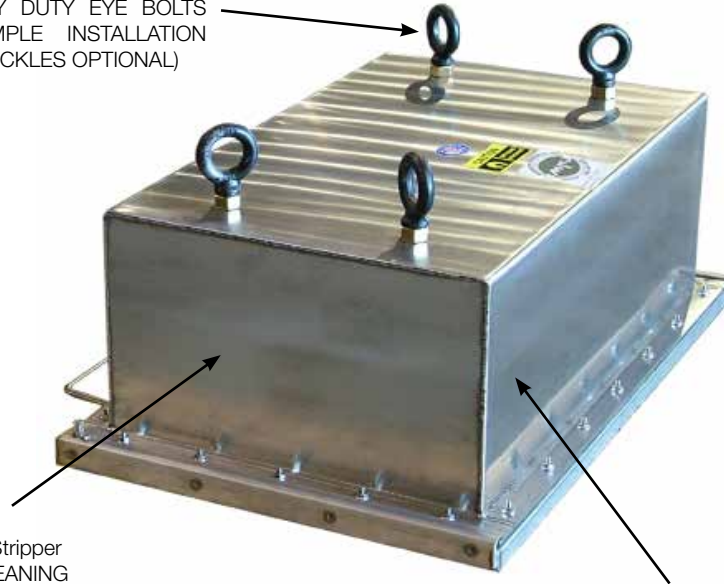


Magnets | Material Handling
Electronic Inspection | Service

Quick-Clean Suspended Permanent Magnet

Series: RBM

(4) HEAVY DUTY EYE BOLTS FOR SIMPLE INSTALLATION (TURN BUCKLES OPTIONAL)



QUICK CLEAN PULL OUT Stripper FOR QUICK AND EASY CLEANING OF MAGNET WORKING SURFACE

STAINLESS STEEL MAGNET ENCLOSURE WITH HIGH GRADIENT 2 POLE MAGNET WORKING SURFACE

Application

MPI's Quick-Clean Suspended Permanent Magnets remove both large and small types of tramp metal from product streams conveyed by belts at speeds up to 250 feet per minute. The captured tramp metal accumulates across the entire magnetic face, substantially increasing the amount of tramp iron the magnet can retain before cleaning is required.

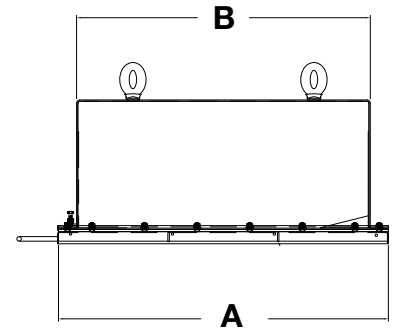
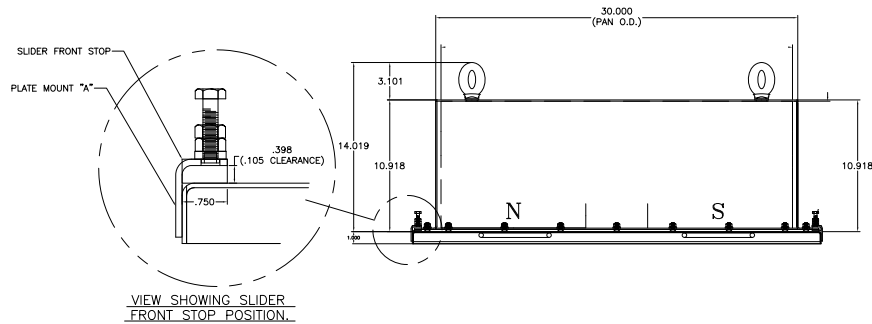
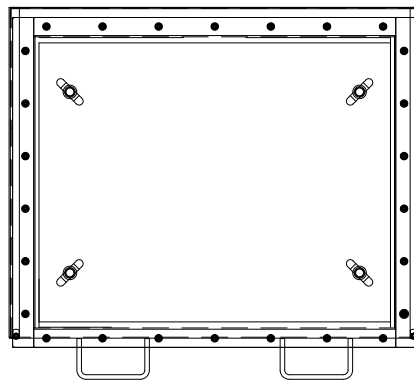
Operation

The Quick-Clean Suspended Permanent Magnets consist of a large plate magnet suspended over the conveyed product stream. The magnet should be suspended approximately 5"-8" above the product stream for optimum tramp metal removal (8"-10" with bucking option). The magnet should be located in an area that has easy access to allow for proper cleaning.

The magnet should operate in an area of the belt where no integral parts of the conveyor can become magnetized, such as idler rollers or belting support plates, as this may cause excessive wear on the conveyor system. To clean the magnet, simply grab the handle on the quick clean stripper and pull towards you until it hits stop. After all metal has fallen from the stripper, slide the stripper face back into place.

**Specifications subject to change*

Series RBM Version 3.0 © MPI



Quick-Clean Suspended Permanent Magnet RBM Selection Guide

Model #	Belt Width A		Magnet Width B		Unit Weight	
	IN	CM	IN	CM	LBS	KG
RBM-18	24	61	18	46	950	432
RBM-24	30	76	24	61	1300	591
RBM-30	36	91	30	76	1600	727
RBM-36	42	107	36	91	1900	864
RBM-42	48	122	42	107	2300	1045

Standard Features

- Permanent ceramic 8 magnet will not demagnetize, create heat or require electricity to operate
- Stainless steel enclosed magnet
- Economical solution for equipment protection
- Includes four (4) eye bolts for suspension
- Optional bucking magnet design increases reachout of magnetic field by 25%
- Quick-clean stripper removes metal from working surface when pulled towards operator
- Ceramic, Rare Earth and exclusive Hi-G hybrid designs available

Options

- Self-cleaning models
- Custom support frames
- Heavy-duty sanitary design support frame
- “Bucking Magnet” configuration for enhanced strength and reach out, resulting in a performance increase of approximately 25%

*Specifications subject to change

Series RBM Version 3.0 © MPI