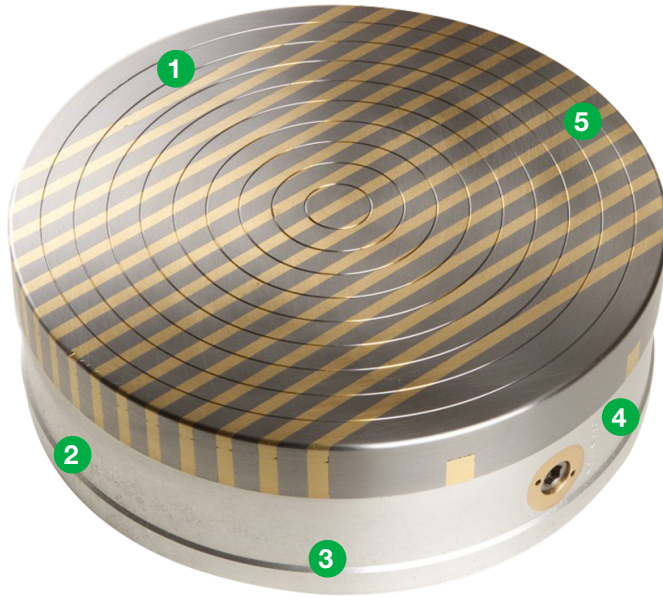




Magnetic Products, Inc.
Highland, Michigan | mpimagnet.com

Double Ceramic Round Chuck



- 1 Solid silver brazed top plate with parallel poles
- 2 Waterproof design
- 3 Aluminum base with the possibility of mounting on a flange or into a chuck
- 4 Very light aluminum body
- 5 Double ceramic magnetic system

One (1) year warranty for the magnetic system

Manufactured in Europe to the highest quality standards

Application: Circular grinding

Technology: Permanent

Chuck dimensions: from 6in

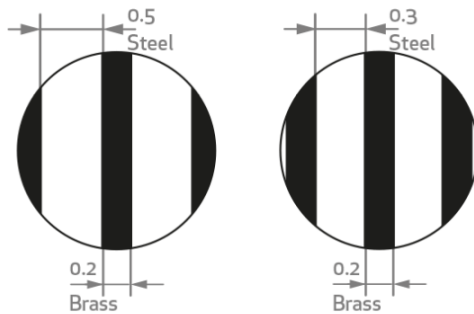
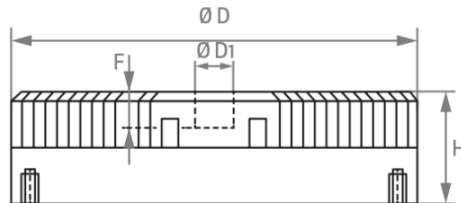
Holding Force: 140N/cm² / 203lbs/in²

Minimum workpiece size: 1.6x1.6x0.3in

Regrinding limit: 0.2in

Pole pitch: .50 (.3+0.2in) (steel/brass) or .70 (.5+0.2in) (steel/brass)

Poles: Parallel



available while supplies last

Part Number	Description	Diameter (IN)	Height (IN)	Diameter 1 (IN)	F (IN)	Pole Pitch	Weight (LBS)
RC-0155-CER*	6" Double Ceramic Round Chuck	6	3	0.866	0.866	T138+5	17
RC-0200-CER*	8" Double Ceramic Round Chuck	8	3	0.866	0.866	T138+5	26.5
RC-0250-CER*	10" Double Ceramic Round Chuck	10	3	0.866	0.866	T138+5	37.5
RC-0300-CER*	12" Double Ceramic Round Chuck	12	3	0.866	0.866	T1712+5	60

Specifications subject to change • * Items stocked F.O.B. Highland, MI