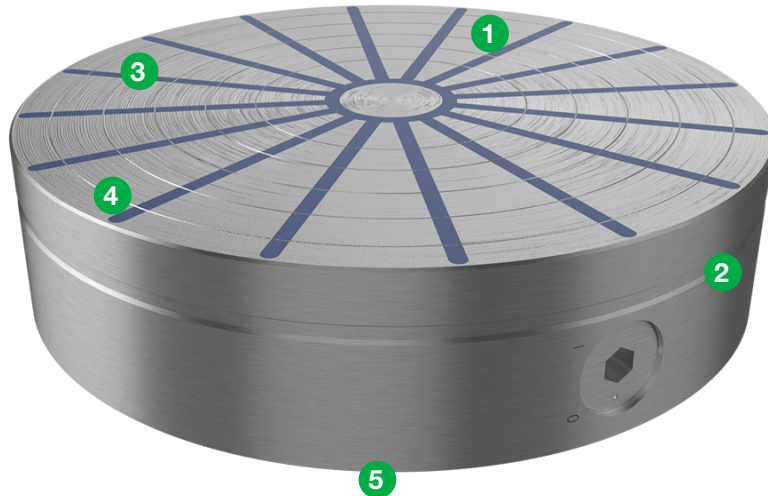




Magnetic Products, Inc.  
Highland, Michigan | mpimagnet.com

# Double Rare Earth Round Chuck



- 1 Compact top plate made of one piece of steel with radial poles
- 2 Very powerful double magnetic system with neodymium magnets
- 3 Regrind limit: 0.20in
- 4 Suitable for turning and circular grinding
- 5 Steel base

One (1) year warranty for the magnetic system

Manufactured in Europe to the highest quality standards

Included with Each Magnet: Allen Key and instructions for use

Optional: Auxiliary top plate and Top plate with T-slots

**Application:** Turning

**Use:** Turning and grinding of round and ring-shaped workpieces. Facing work, internal and external diameter machining is possible separately or in one operation.

**Technology:** Permanent

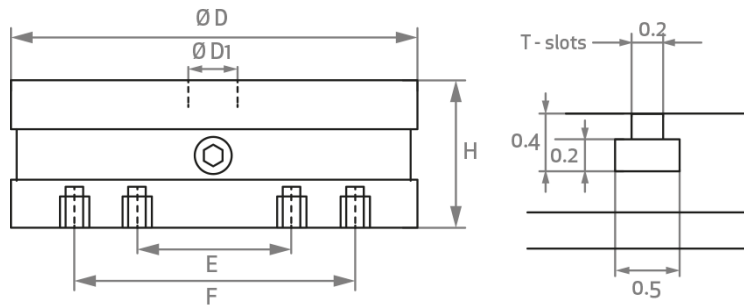
**Chuck dimensions:** from 5in

**Holding Force:** 140N/cm<sup>2</sup> / 203lbs/in<sup>2</sup>

**Minimum workpiece limit:** 35mm / 1.377"

**Regrinding limit:** 5 mm / .196"

**Poles:** Radial



Part Number	Description	Diameter (IN)	Height (IN)	Diameter 1 (IN)	E (IN)	F (IN)	Weight (LBS)
RC-130-REN*	Double Rare Earth Round Chuck	5	2.2	0.59	–	3.9	11
RC-150-REN*	Double Rare Earth Round Chuck	6	2.2	0.59	3.15	4.7	16
RC-200-REN*	Double Rare Earth Round Chuck	8	2.2	0.787	4.33	7.1	29
RC-250-REN*	Double Rare Earth Round Chuck	10	2.8	1.18	5.51	8.7	55
RC-300-REN*	Double Rare Earth Round Chuck	12	2.9	1.49	7.09	10.2	82
RC-350-REN	Double Rare Earth Round Chuck	14	2.9	1.57	8.66	11.81	108.03
RC-400-REN	Double Rare Earth Round Chuck	16	2.9	1.57	10.24	13.39	149.91
RC-500-REN	Double Rare Earth Round Chuck	20	3	1.96	11.81	15.75	240.30
RC-600-REN	Double Rare Earth Round Chuck	24	3	3.54	13.78	17.72	379.20
RC-700-REN	Double Rare Earth Round Chuck	28	3	3.54	13.78	17.72	515.88
RC-800-REN	Double Rare Earth Round Chuck	32	4.3	3.93	15.75	27.56	925.94

Specifications subject to change • \* Items stocked F.O.B. Highland, MI