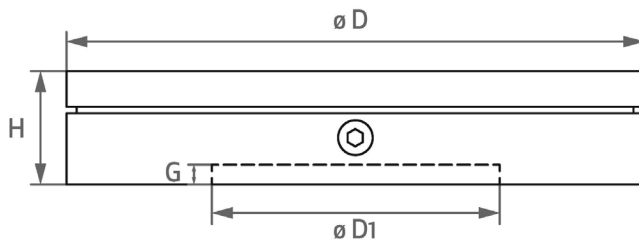
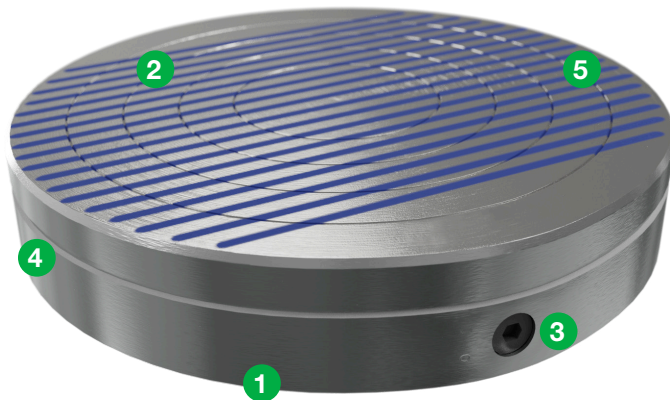




Magnetic Products, Inc.  
Highland, Michigan | mpimagnet.com

# Rare Earth Round Chuck



- 1 Solid steel body
- 2 Top plate with parallel pole configuration
- 3 Continuous adjustment of the holding force
- 4 Waterproof design
- 5 Double magnetic system

Longer life span top plate regrinding limit

Low height

One (1) year warranty for the magnetic system

Manufactured in Europe to the highest quality standards

Included with Each Magnet: Allen Key and instructions for use

**Application:** Circular grinding

**Use:** Clamping of workpieces during turning and circular grinding

**Technology:** Permanent

**Chuck dimensions:** from 6in

**Holding Force:** 160N/cm<sup>2</sup> / 232lbs/in<sup>2</sup>

**Minimum workpiece size:** 40mm x 8mm / 1.57" x .314"

**Regrinding limit:** 10mm / .393"

**Pole pitch:** T15mm - 11mm+4mm / T .590" - .433"+.157" (steel/epoxy)

**Poles:** Parallel

Part Number	Description	Diameter (IN)	Height (IN)	G (IN)	D1 (IN)	Weight (LBS)
MAX-155-REN*	6" Rare Earth Round Chuck	6	2.2	0.2	2.0	19.8
MAX-200-REN*	8" Rare Earth Round Chuck	8	2.2	0.2	2.4	33.1
MAX-250-REN*	10" Rare Earth Round Chuck	10	2.2	0.2	3.2	48.5
MAX-300-REN*	12" Rare Earth Round Chuck	12	2.2	0.24	5.9	70.6
MAX-350-REN	14" Rare Earth Round Chuck	14	2.2	0.24	6.7	94.8
MAX-400-REN	16" Rare Earth Round Chuck	16	2.2	0.24	7.9	123.5

Specifications subject to change • \* Items stocked F.O.B. Highland, MI