



MAGNETIC PRODUCTS, INC.

ENGINEERED METAL CONTROL SOLUTIONS

intell-i-mag

2-in Liquid Finger Trap Blade Magnet

Series: LFT2



Intell-I-Mag®: Sensor-Enabled Intelligent Separation

Intell-I-Mag® is a technology platform that pairs sensors within a magnetic separator with an app or computer-based dashboard to measure and report magnet saturation in real-time. This patented system is the first and only magnetic separation technology of its kind. MPI's Blade Magnet comes Intell-I-Mag®—Ready as standard, so it's easy and cost-effective to enable Intell-I-Mag® at any time.

Ergonomic Power-grip Design

The Blade Magnet handle architecture resembles the hilt of a sword. The ergonomic power-grip handle, enables operators to utilize their larger forearm muscles instead of their wrists for improved control and reduced strain during cleaning and inspection.

Single Tube Engineered for Durability and Strength

A single 2-inch tube replaces the industry standard multiple tube design. This state-of-the-art single-tube design allows for a thicker-than-average tube wall, which provides better durability properties. MPI's Blade Magnet design offers the highest holding force in the market—11,500 gauss strength or 22 lbs. pull test readings (with a 1/2 inch ball).

MPI's 2-inch Tube Blade Magnet Offers Optimal Flow-ability and Strength.

The Blade Magnet is designed to process diverse liquids common in food, chemical, and pharmaceutical processing, boiler protection (closed systems), and paper mills. It effectively removes ferrous contaminants while maintaining unrestricted flow.

Metal Detectable Stripper

MPI has incorporated a simple but long-overdue metal-detectable stripper, simplifying the cleaning process of the magnetic separator reducing downtime and ensures product quality and safety downstream.

Maximum Pressure Levels

Designed for operating at up to 150 PSI maximum pressure (at 248°F) depending on model size.

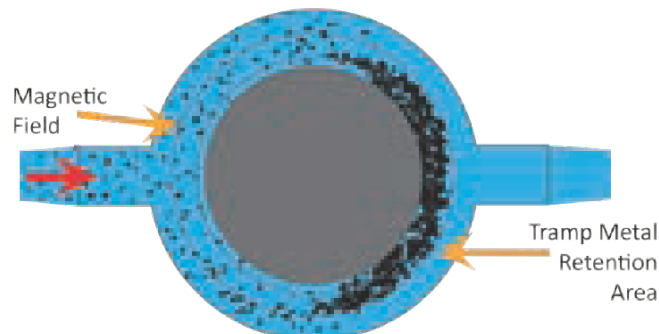
High Temperature Rating

Designed for operating temperatures up to 221°F depending on model configurations.

USDA Certified

USDA approved certified sanitary (USDA AMS NSF / ANSI /3-A14159-1 2002) available

2" Tube Design



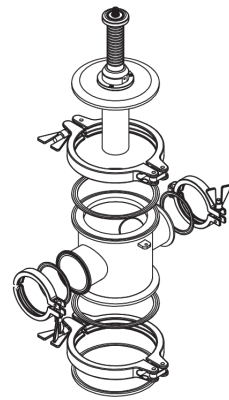
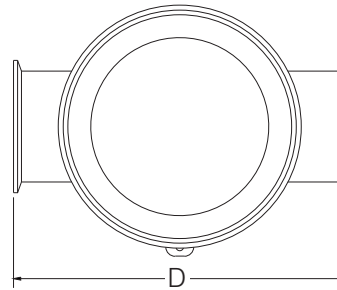
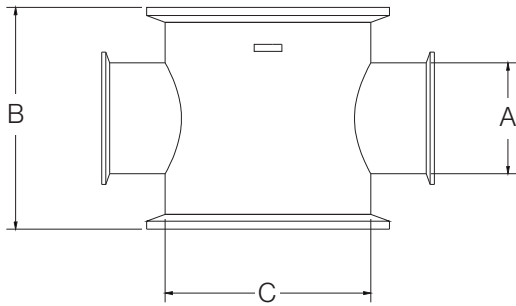
*Specifications subject to change

Series LFT2 Version 4.0 © MPI

MPI

683 Town Center Drive, Highland, MI 48356 | p. 248.887.5600
info@mpimagnet.com | www.mpimagnet.com

2" Tube Design



Capacities - Gallons Per Minute / Liters Per Second

LFT SIZE		Fluid and Strained Product		Fibrous and Crushed Product		Viscous and Heavy Product	
IN.	MM.	GPM	LPS	GPM	LPS	GPM	LPS
1.5	38	1-64	.06-4.0	1-53	.06-3.3	1.0-33	.06-2.1
2.0	51	65-132	4.1-8.3	54-116	3.4-7.3	34-77	2.1-4.9
2.5	64	133-154	8.4-9.7	117-132	7.4-8.3	78-105	4.9-6.6
3.0	76	133-154	8.4-9.7	117-132	7.4-8.3	78-105	4.9-6.6
4.0	102	365-714	23-45	220-429	14-27	145-284	9-18

LFT2 Series Selection Guide

LFT Model #	Pipe Diameter "A"		Height "B"		Diameter "C"		Width "D"		Approx. Unit Weight		# MAGNETIC TUBES
	IN.	MM.	IN.	MM.	IN.	MM.	IN.	MM.	LBS.	KG.	
LFT2-1.5	1.5	38	6	153	5.563	141	9	229	26	12	1
LFT2-2.0	2.0	51	6	153	5.563	141	9	229	26	17	1
LFT2-2.5	2.5	64	6	153	5.563	141	9	229	28	19	1
LFT2-3.0	3.0	76	6	153	5.563	141	9	229	50	23	1
LFT2-4.0	4.0	102	6	153	5.563	141	9	229	125	57	1

Liquid Trap Magnet Options

Intelligence with Intell-I-Mag®:

- Intell-I-Mag® ready (upgradeable)
- Intell-I-Mag® included

Pipe Size:

- Available in diameters from 1.5", 2", 2.5", 3" and 4"

Maximum Operating Pressure:

- 150 PSI at 248°F (standard on sizes 4" and smaller)

Cleaning Method:

- Manual quick-clean with metal detectable stripper included

Magnet Element:

- Hi-G high performance Rare Earth

Material Construction:

- 304 Stainless Steel (standard)
- 316 Stainless Steel

Magnetic Material Temperature:

- 176 F @ 52+ MGOe (rare earth) (standard)
- 248° @ 48 MGOe (rare earth)

Lock Out Tab: Prevents unauthorized entry via customer supplied and installed pad lock

- Not included (standard)
- Included

USDA Magnet Certification:

- Not included (standard)
- Included

Gasket Material:

- Buna material, temperature range: -40°F to 225°F (standard)
- Viton material, color white, temperature range: -10°F to 400°F
- Customer specified

Inlet/Outlet Flange Design:

- Tri-Clover sanitary heavy duty quick-release clamp (standard)
- NPT threads (for use of spin on flanges)
- ANSI 150 pound flange
- Plain end for welded pipe installation
- Customer specified

Water Jacket: For heating or cooling products

- Not included (standard)
- Included

Housing Bottom Design

- Sanitary tool-less clamp (standard)
- Sanitary clamp with lock-out option (tool required)
- Sanitary tool-less clamp with dual lock-out option
- Seam welded housing - not removable, with a drain