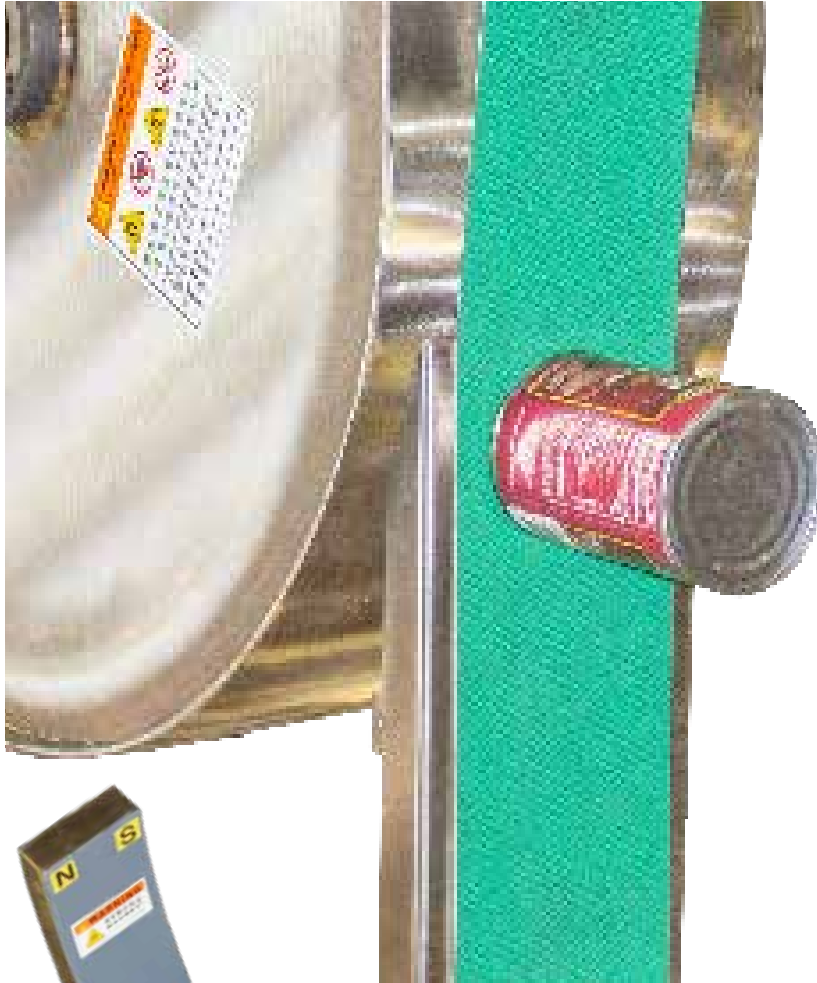




MAGNETIC PRODUCTS, INC.
ENGINEERED METAL CONTROL SOLUTIONS

Magnetic Conveying Box Rails Series: BR

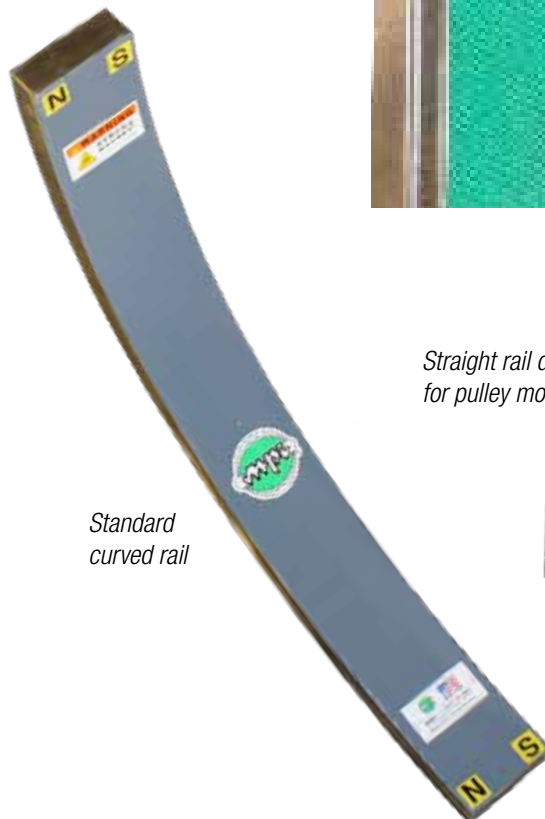


MPI's Magnetic Box Rails are used to hold and position ferrous or partly ferrous parts. They are ideal for use in "can handling" conveyor systems and designed for easy installation into new or existing conveyors or material handling equipment. The rail's strong magnetic field is completely contained within the working surface and is extremely effective in applications which require a high "reachout" magnetic field.

Magnetic Box Rails are used to:

- Save floor space by elevating parts up steep inclines or vertically
- Quickly change direction of moving parts
- Control the speed of moving parts to accelerate or decelerate
- Stabilize and hold parts in position
- Magnetically separate ferrous parts from non-ferrous materials in conveying and processing lines

Magnetic Box Rails are usually mounted in tandem with magnetic pulleys and other rails beneath a conveyor belt. The standard design provides quick installation to conveyor framework or table and can be custom designed and manufactured to fit your specifications.



*Standard
curved rail*

*Straight rail designed
for pulley mounting*

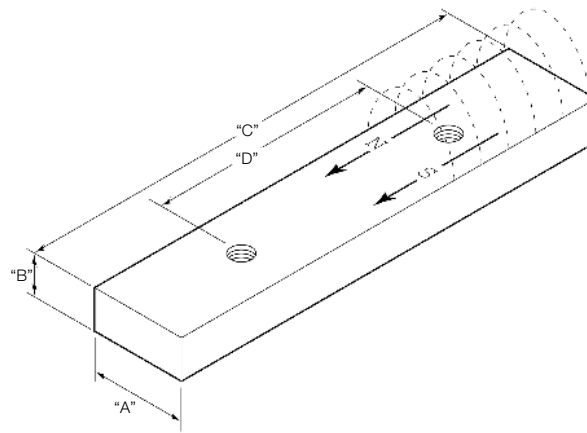


*Specifications subject to change

Series BR Version 4.0 © MPI

MPI

683 Town Center Drive, Highland, MI 48356 | p. 248.887.5600
info@mpimagnet.com | www.mpimagnet.com



BOX RAIL – Selection Guide

BR - MODEL NUMBER	WIDTH "A"		THICKNESS "B"		LENGTH "C"	TAP DISTANCE "D"
	IN	MM	IN	MM		
BR-2	2.63	66	.563	14	Built to customer specifications (up to 8')	Located on centerline of rail, 3.0" from each end and spaced equally on approximately 12.0" centers
BR-4	4.19	106	.812	21		
BR-6	4.19	106	1.06	27		
BR-8	4.19	106	1.31	33		
BR-12	4.19	106	1.94	49		
BR-16	5.19	132	2.56	65		
BR-24	8.19	208	4.06	103		

Box Rail Selectable Options

Style:

- **BR Style box rail (standard)**
- BRT Style T-type with 1" tabbed flanges whole length (increases overall width by 1")

Rail Series:

- Rail series range from 2 to 24 summarized in the table above (standard)
- Custom sizes available

Rail Length:

- Lengths up to 96" long (standard)
- Custom sizes available

Magnetic Material:

- Ceramic (standard)
- REN Rare earth

Shape:

- Straight
- Curved

Magnet Taper:

- None - full strength, full length (standard)
- Tapering field 12" on
- Tapering field 12" off
- Tapering field 12" on and off

Face Plate Design:

- Smooth (standard)
- Rigidized - for reduced belt friction

Tapped Mounting Holes:

- Included - tapped holes (5/16-18) located on centerline of rail, 3.0" from each end and spaced equally on approximately 12.0" centers (standard)
- Not included - plain back plate
- Mounting tabs - used in seam welded applications
- Customer specified mounting holes / method

Weld and Finish:

- Stitch welded and paint (standard)
- Seam welded stainless steel construction with no paint - for water tight wash down applications

Infeed/Outfeed Design:

- Square (standard)
- Pulley mounting - angle on one end to match pulley

*Specifications subject to change

Series BR Version 4.0 © MPI

MPI

683 Town Center Drive, Highland, MI 48356 | p. 248.887.5600
info@mpimagnet.com | www.mpimagnet.com