



Pro-Tector

Series: GF-MD Combo Unit

CASSEL

Drawer Magnet

Metal Detector



The Pro-Tector efficiently combines the simplicity of a magnetic separator with the reliability of a metal detector in one compact unit. This innovative system assures the quick, easy removal of metals from the product stream, while its size accommodates the tight spaces commonly found in production facilities.

Designed for use in gravity-feed pipes to monitor for metal contaminants in continuous-flowing granules or powders such as sugar, flour, corn meal, or spices, the Pro-Tector's integrated drawer magnet provides maximum magnetic separation of contaminants. Product first flows through the drawer magnet, which is located at the top of the unit, and then ferrous-free product continues through a gravity-feed metal detector.

The Pro-Tector's integrated drawer magnet employs twin layers of rare-earth magnetic tubes to provide maximum magnetic separation of metal contaminants, and its quick-clean feature allows the operator to clean the unit in under ten seconds.

Extremely reliable and easy to use, the Pro-Tector's integrated metal detector features a straightforward operating system that quickly guides the user through set-up and operation.

- Provides superior defense against ferrous and non ferrous metal contamination
- Combines the simplicity of a drawer magnet with the reliability of a metal detector
- Hygienic construction with a USDA certified drawer magnet available
- Easy to use
- Increased metal protection, removing all ferrous contamination
- Reduce wasted material due to removal of ferrous contamination
- Compact, space saving all-in-one design

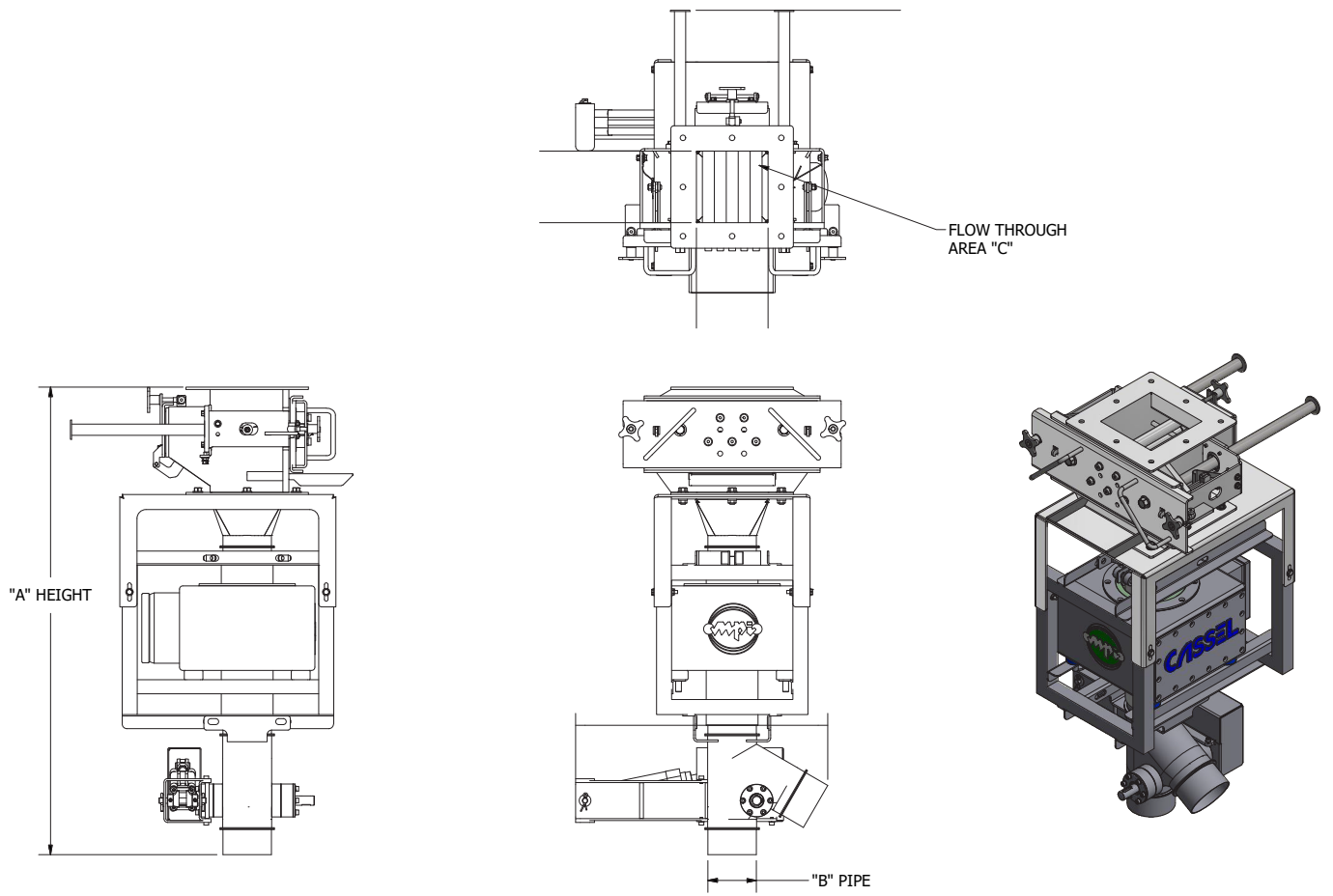
USDA
Certified Drawer Magnet Available

*Specifications subject to change

Series Pro-Tector Version 2.0 © MPI

MPI

683 Town Center Drive, Highland, MI 48356 | p. 800.544.5930 | f. 248.887.6100
info@mpimagnet.com | www.mpimagnet.com



Pro-Tector - Selection Guide

Pro-Tector Model#	Overall Height w/ Reject "A"	Flow Rate (Based on DMU)		Pipe Dia. "B"	Flow Through Area "C"	Sensitivity from FE	DMU Model#	GF Model#
		CU Feet/Hr	Gallons/Hr					
Pro-100	39.162 in.	300	2,244	3.93 in.	36 sq. in.	<0.5	DMU-206-QC	GF-100
Pro-150	49.004 in.	600	4,488	5.90 in.	64 sq. in.	<0.6	DMU-208-QC	GF-150
Pro-200	63.402 in.	1350	10,098	7.87 in.	100 sq. in.	<1.2	DMU-210-QC	GF-200



**Specifications subject to change*

Series Pro-Tector Version 2.0 © MPI

MPI

683 Town Center Drive, Highland, MI 48356 | p. 800.544.5930 | f. 248.887.6100
 info@mpimagnet.com | www.mpimagnet.com